

Emergency Department Triage of Obstetric Patients Algorithm

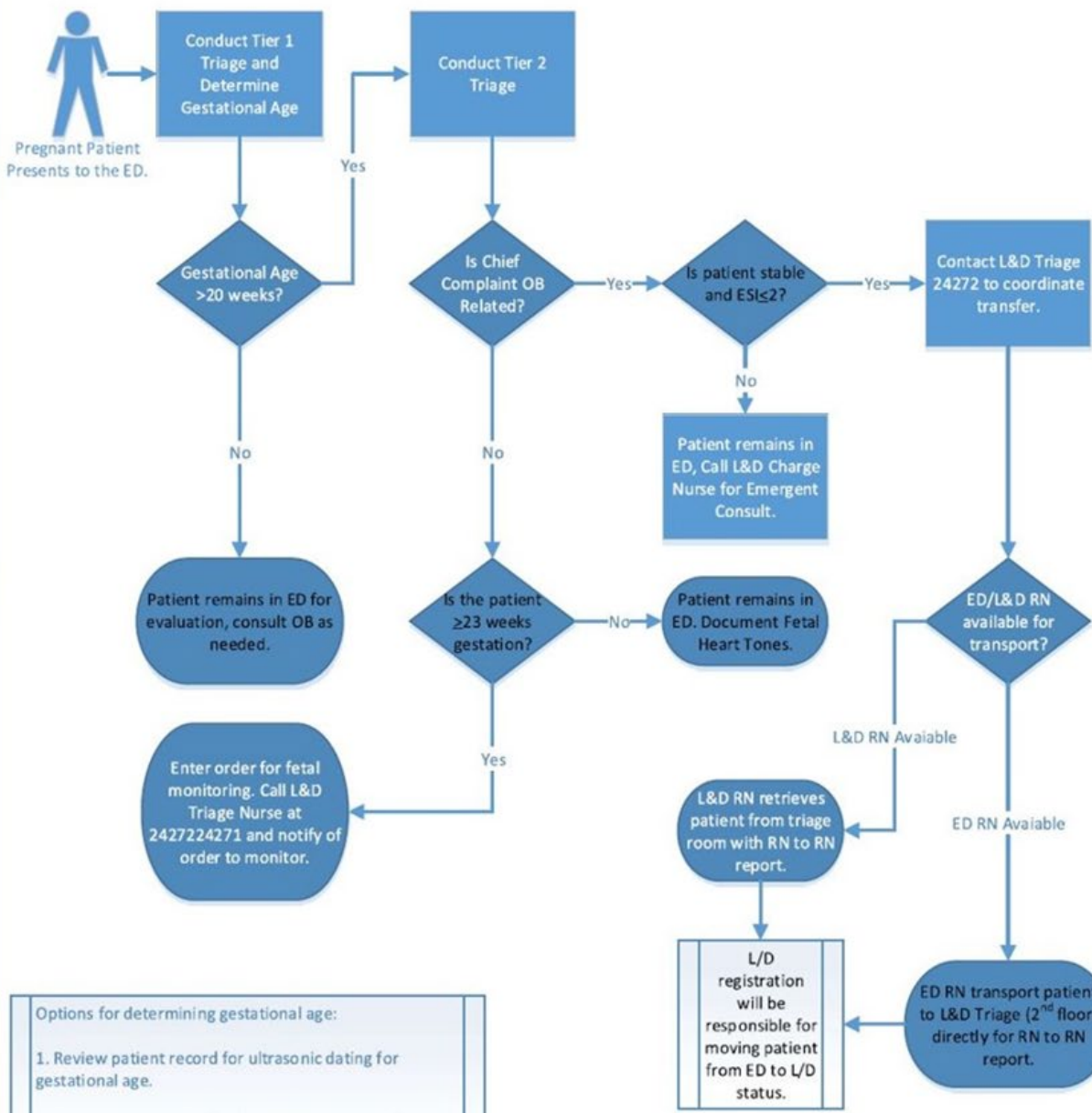
L&D Triage: 24272

OB Hospitalist: 72219

L&D Charge Nurse: 24271

ED Front Desk Triage: 72263

ED IA: 72215



- OB Related Complaints and associated ESI level:**
- ESI 2**
- R/O LABOR
 - Active labor, Regular contractions ≤ 5 mins apart
 - Severe pain (≥ 7 on scale)
 - PRETERM (20–30 6/7 weeks)
 - Backache, Contractions, Tightening, “Cramping”
 - Spotting, Rupture of Membranes or R/o UTI symptoms
 - VAGINAL DISCHARGE
 - Heavy blood loss, Passing clots
 - FETAL WELL-BEING
 - No fetal movement
 - Decelerations
 - BLOOD PRESSURE
 - Severe preeclampsia
 - Epigastric pain, Blurred vision, Severe Headache
 - Elevated BP
 - History of seizure Within the last 6 hrs Alert on arrival
- ESI 3**
- R/O LABOR
 - Irregular contractions >37 weeks
 - Moderate pain (4–6) on scale)
 - VAGINAL DISCHARGE >37 weeks
 - Spotting
 - Spontaneous Rupture of membrane
 - FETAL WELL-BEING
 - ↓ Fetal Movement
 - Non-reactive Non-stress Test (NST)
 - BLOOD PRESSURE
 - BP checks, History of high BP
 - Previous Cesarean in Labor
- ESI 4**
- R/O LABOR
 - Early labor, Mild irregular contractions
 - Backache > 37 weeks, Mild pain (1–3 on scale)
 - VAGINAL DISCHARGE
 - Bloody show, Mucus, R/o infection
- Note: EMERGENT OB Related Complaints are to be seen and stabilized in the ED PRIOR to transport. Examples of EMERGENT OB Related Complaints include:
- Trauma, Hemorrhage, Presenting fetal parts,
 - Prolapsed umbilical cord, Impending Delivery, Actively Seizing
- Based on the Florida Hospital OB Triage Acuity Tool.

Staff

Options for determining gestational age:

1. Review patient record for ultrasonic dating for gestational age.
2. Use pregnancy wheel to determine gestational age based on last menstrual period.